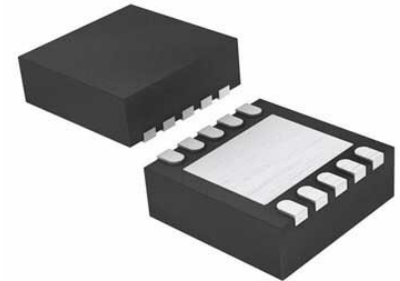


Conv DC-DC 2.4V to 16V Inv/Step Up Dual-Out 1V to 40V/-40V Automotive 10-Pin DFN EP Tube

Manufacturers	Analog Devices, Inc
Package/Case	QFN10
Product Type	Power Management ICs
RoHS	Pb-free Halide free
Lifecycle	



Images are for reference only

Please submit RFQ for LT3471EDD#PBF or [Email to us: sales@ovaga.com](mailto:sales@ovaga.com) We will contact you in 12 hours.

[RFQ](#)

General Description

The LT3471 dual switching regulator combines two 42V, 1.3A switches with error amplifiers that can sense to ground providing boost and inverting capability. The low VCESAT bipolar switches enable the device to deliver high current outputs in a small footprint. The LT3471 switches at 1.2MHz, allowing the use of tiny, low cost and low profile inductors and capacitors. High inrush current at start-up is eliminated using the programmable soft-start function, where an external RC sets the current ramp rate. A constant frequency current mode PWM architecture results in low, predictable output noise that is easy to filter.

The LT3471 switches are rated at 42V, making the device ideal for boost converters up to $\pm 40V$ as well as SEPIC and flyback designs. Each channel can generate 5V at up to 630mA from a 3.3V supply, or 5V at 510mA from four alkaline cells in a SEPIC design. The device can be configured as two boosts, a boost and inverter or two inverters.

The LT3471 is available in a low profile (0.75mm) 10-lead 3mm \times 3mm DFN package.

Features

1.2MHz Switching Frequency

Low VCESAT Switches: 330mV at 1.3A

High Output Voltage: Up to 40V

Wide Input Range: 2.4V to 16V

Inverting Capability

5V at 630mA from 3.3V Input

12V at 320mA from 5V Input

Uses Tiny Surface Mount Components

Low Shutdown Current: <1 μ A

Low Profile (0.75mm) 10-Lead 3mm \times 3mm DFN Package

Application

Organic LED Power Supply

Digital Cameras

White LED Power Supply

Cellular Phones

Medical Diagnostic Equipment

Local \pm 5V or \pm 12V Supply

TFT-LCD Bias Supply

xDSL Power Supply

Related Products



[LT3763EFE](#)

Analog Devices, Inc
TSSOP28



[LTC4417IUF](#)

Analog Devices, Inc
QFN-24



[LTC1966CMS8#PBF](#)

Analog Devices, Inc
MSOP-8P



[LTM8045EY#PBF](#)

Analog Devices, Inc
BGA40



[LT1038CK](#)

Analog Devices, Inc
TO-3



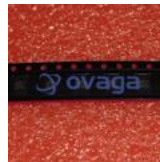
[LTC3440EMS](#)

Analog Devices, Inc
MSOP10



[LTC2990IMS#PBF](#)

Analog Devices, Inc
10MSOP



[LT4295IUFD#PBF](#)

Analog Devices, Inc
28-WFQFN