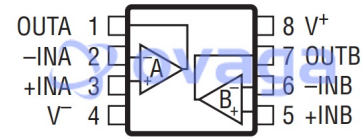


IC AMP R-R CMOS DUAL 8-MSOP

Manufacturers	<a href="#">Analog Devices, Inc</a>
Package/Case	MSOP-8
Product Type	Amplifier ICs
RoHS	Pb-free Halide free
Lifecycle	



Images are for reference only

Please submit RFQ for LTC6084CMS8#PBF or [Email to us: sales@ovaga.com](mailto:sales@ovaga.com) We will contact you in 12 hours.

[RFQ](#)

## General Description

The LTC6084/LTC6085 are dual/quad, low cost, low offset, rail-to-rail input/output, unity-gain stable CMOS operational amplifiers that feature 1pA of input bias current.

A 1.5MHz gain bandwidth, and 0.5V/ $\mu$ s slew rate, along with the wide supply range and a low 0.75mV offset, make the LTC6084/LTC6085 useful in an extensive variety of applications from data acquisition to medical equipment and consumer electronics. The 110 $\mu$ A supply current and the shutdown mode are ideal for signal processing applications which demand performance with minimal power.

The LTC6084/LTC6085 have an output stage which swings within 5mV of either supply rail to maximize signal dynamic range in low supply applications. The input common mode range includes the entire supply voltage. These op amps are specified on power supply voltages of 2.5V and 5V from  $-40^{\circ}\text{C}$  to  $125^{\circ}\text{C}$ . The dual amplifier LTC6084 is available in 8-lead MSOP and 10-lead DFN packages. The quad amplifier LTC6085 is available in 16-lead SSOP and DFN packages.

## Features

Low Offset Voltage: 750 $\mu$ V Maximum

Low Offset Drift: 5 $\mu$ V/ $^{\circ}$ C Maximum

Low Input Bias Current:

1pA (Typical at 25 $^{\circ}$ C)

40pA ( $\leq$  85 $^{\circ}$ C)

Rail-to-Rail Inputs and Outputs

2.5V to 5.5V Operation Voltage

Gain Bandwidth Product: 1.5MHz

CMRR: 70dB Minimum

PSRR: 94dB Minimum

Supply Current: 110 $\mu$ A per Amplifier

Shutdown Current: 1.1 $\mu$ A per Amplifier

Available in 8-Lead MSOP and 10-Lead DFN Packages (LTC6084) and 16-Lead SSOP and DFN Packages (LTC6085)

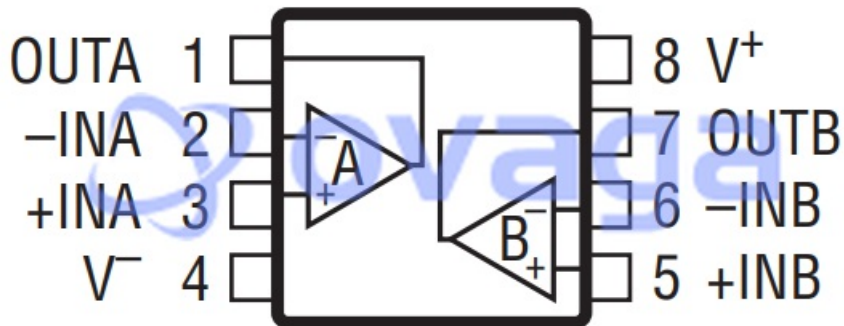
## Application

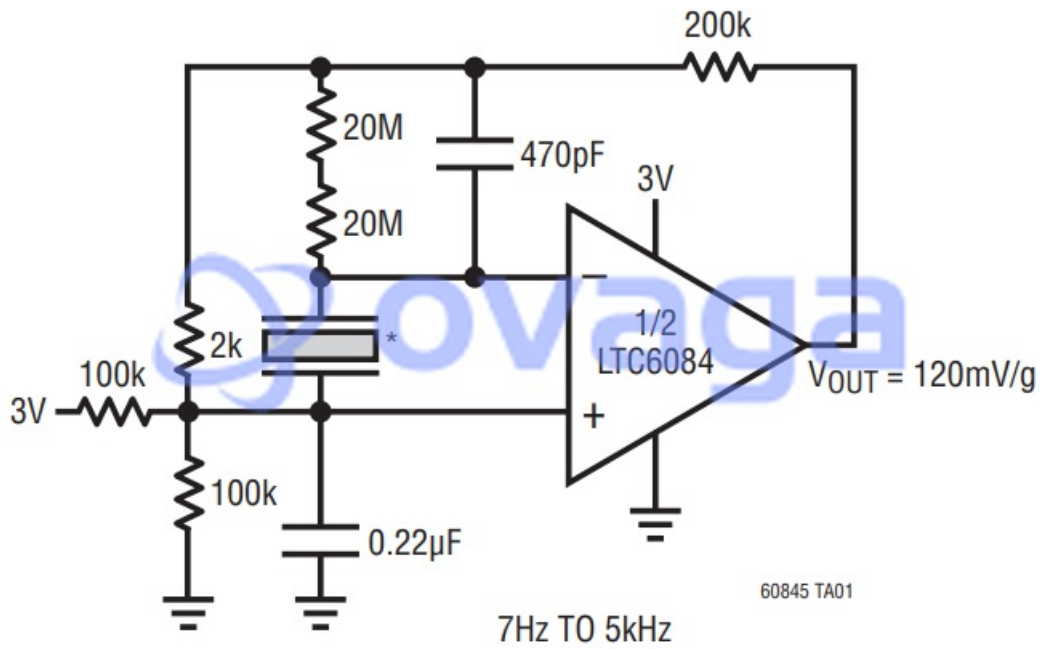
Portable Test  
Equipment

Medical Equipment

Consumer Electronics

Data Acquisition





## Related Products



### [LTC1151CSW#PBF](#)

Analog Devices, Inc  
SOIC-16



### [LT1498CS8](#)

Analog Devices, Inc  
SOP-8



### [LTC2053CMS8](#)

Analog Devices, Inc  
MSOP8



### [LTC1150CN8](#)

Analog Devices, Inc  
DIP8



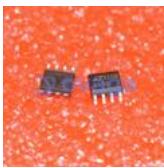
### [LT1491ACS](#)

Analog Devices, Inc  
SOP14



### [LT6105IMS8](#)

Analog Devices, Inc  
MSOP-8



### [LTC1150CS8](#)

Analog Devices, Inc  
SOP8



### [LT1013CN8](#)

Analog Devices, Inc  
DIP-8