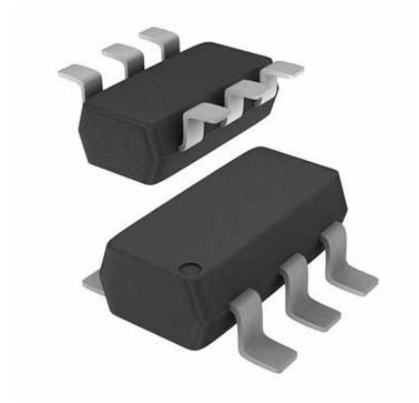


RELAY/INDUCTIVE DRIVER 2 CHANNEL 400mA Supply Voltage Max:14V, No. of Outputs:2Outputs, Output Voltage:14V, Output Current:400mA



Images are for reference only

Manufacturers	ON Semiconductor, LLC
Package/Case	SC-74-6
Product Type	Power Management ICs
RoHS	Rohs
Lifecycle	

Please submit RFQ for NUD3112DMT1G or [Email to us: sales@ovaga.com](mailto:sales@ovaga.com) We will contact you in 12 hours.

[RFQ](#)

General Description

Application

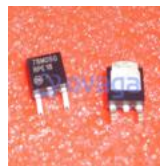
ONSEMI

Related Products



[EFC2J004NUZTDG](#)

ON Semiconductor, LLC
WLCSP-6



[MC78M05CDTG](#)

ON Semiconductor, LLC
TO-252-3



[TLV431CSN1T1G](#)

ON Semiconductor, LLC
SOT-23-3



[NCP603SN330T1G](#)

ON Semiconductor, LLC
TSOP-5



[MC78LC33NTRG](#)

ON Semiconductor, LLC
SOT-23-5



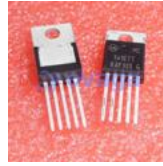
[UC3843BVD1R2G](#)

ON Semiconductor, LLC
SOP-8



[TL431AIDR2G](#)

ON Semiconductor, LLC
SOIC-8



[MC34167TG](#)

ON Semiconductor, LLC
TO-220-5